



## Team 3

**Fostering high priority, multi-Mission Area science with the expertise, facilities and capabilities required**

ELT Champion – Leon Carl, Sponsor – Tim Mchale and Andrea Ostroff, Coach – Bill Werkheiser

# Leadership 201 – July 21, 2017

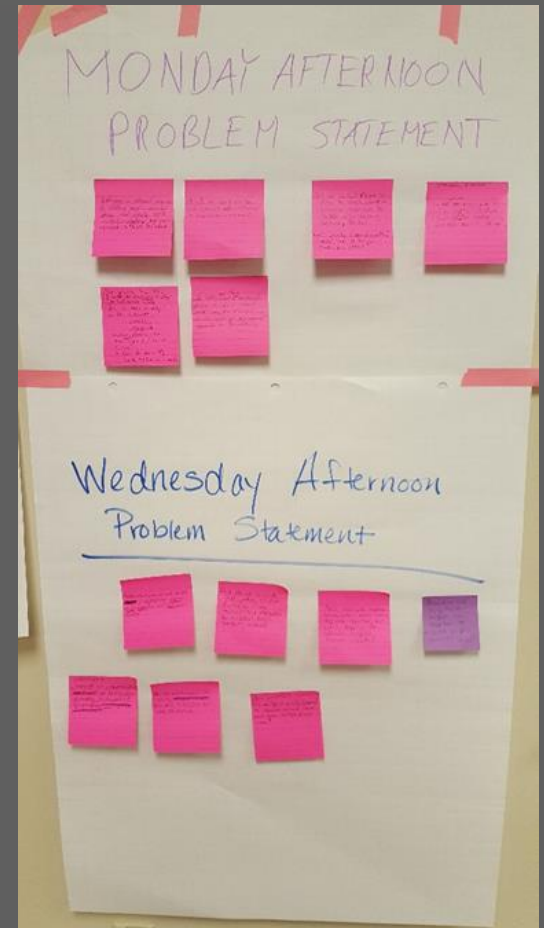
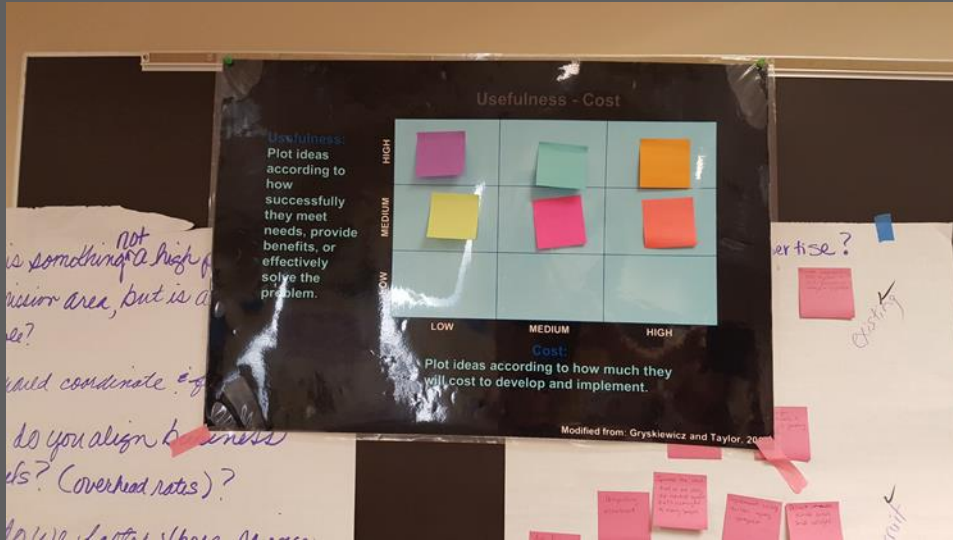
## Team 3 members

- ➔ Tonja Clark, MWR
- ➔ Marsha Gipson, PR
- ➔ Mark Miller, NWR
- ➔ Anke Mueller-Solger, PR
- ➔ Tina Roberts-Ashby, MWR
- ➔ Doug VerDouw, MWR
- ➔ Kelly Welborn, MWR



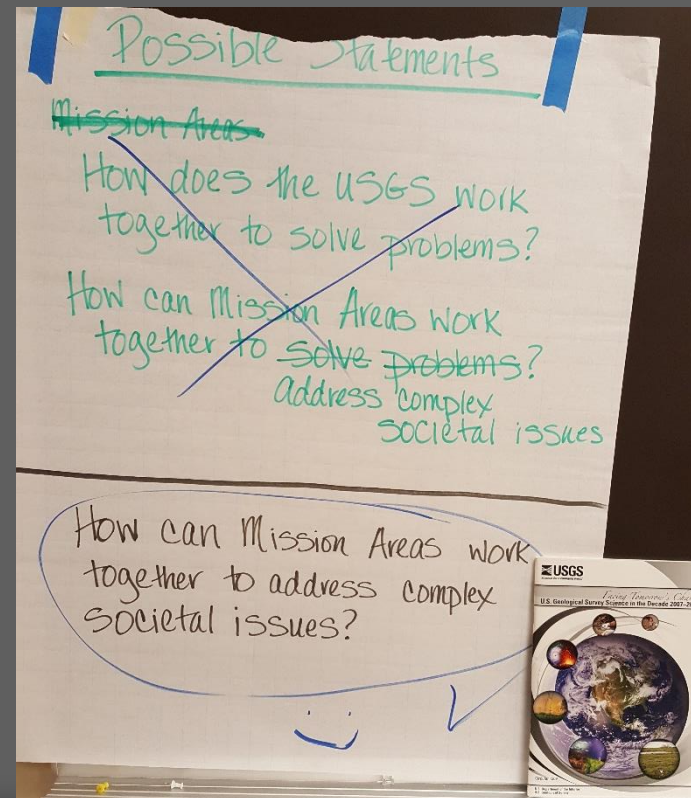
# Tools Used, Most Useful:

- ➔ Brainstorming
- ➔ Brain writing
- ➔ Converging Grids



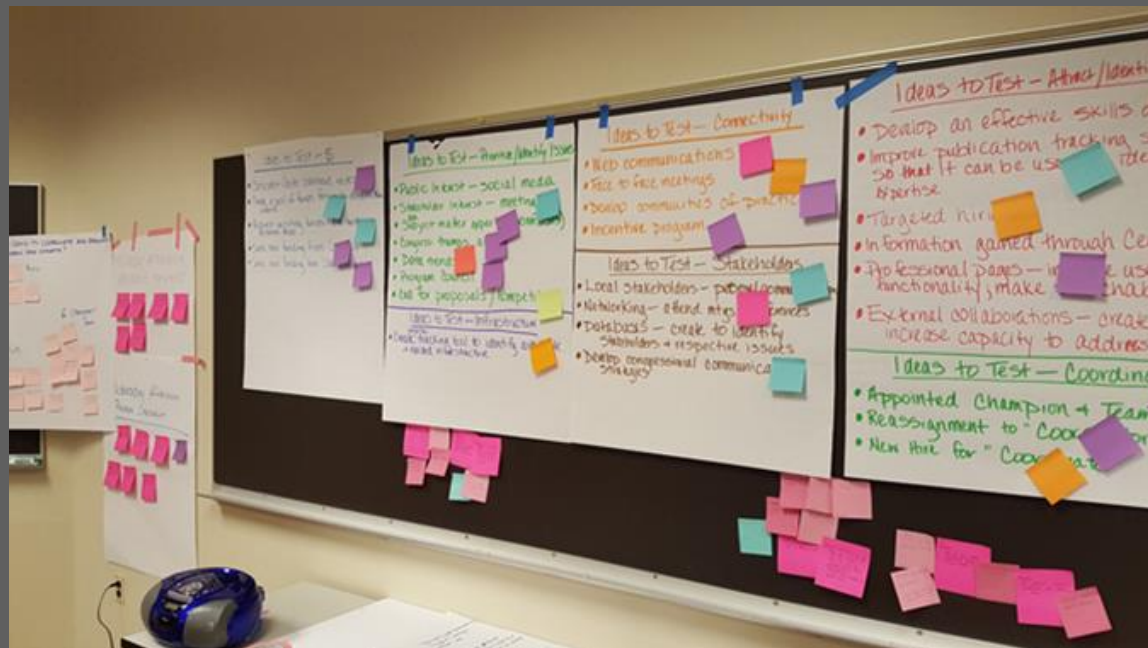
# Problem Statement

How can Mission Areas work together to address complex societal issues?

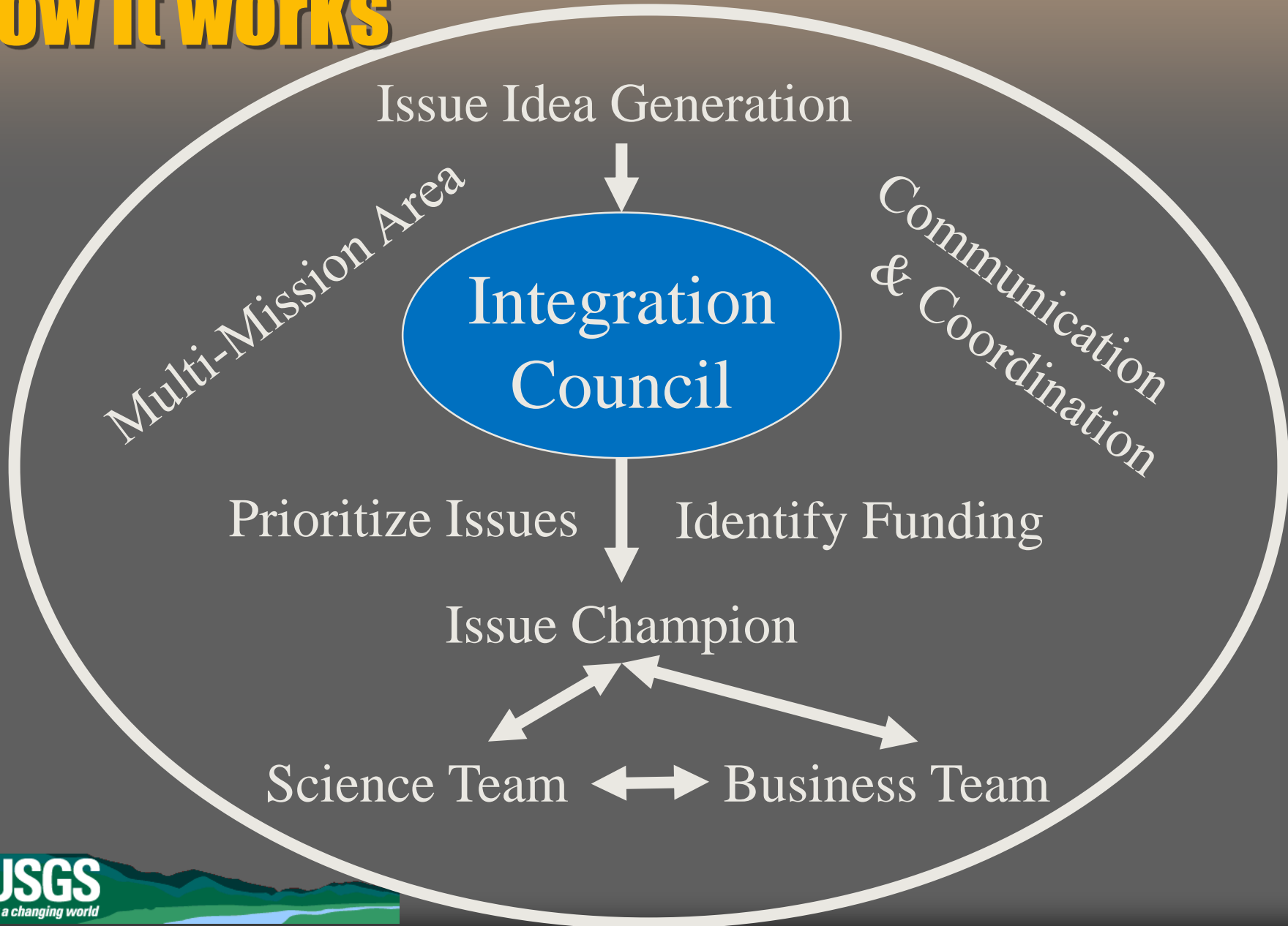


# Recommendations

- ⇒ Reorganization/Integration Council
- ⇒ Identify and Prioritize Issues
- ⇒ Create Coordination
- ⇒ Identify Expertise
- ⇒ Funding
- ⇒ Connections



# How it works



# Questions?